

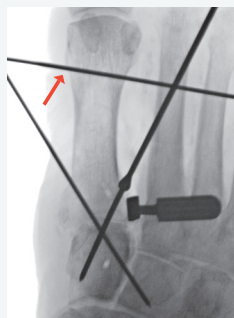
Lapiplasty® SpeedPlate™ Rapid Compression Implants

Non-Guided Key Technique Steps

Provisional Fixation

Prior to this step, follow the key steps outlined on 09-00016L up to step 9.

First, drive the threaded olive wire from the lateral side of the metatarsal flare (starting at the level of the Compressor pin) into the center aspect of the cuneiform. Then apply a straight crossing K-wire from the dorsomedial aspect of the TMT joint for a second point of fixation.



Apply a third point of fixation via a straight K-wire placed distally across the 1st and 2nd Mets (M1-M2).

Confirm the wire placement and final reduction on fluoroscopy before removing the Compressor. Consider desired SpeedPlate™ implant positions to ensure no interference.

1. Position and Secure Drill Guide

Center the Drill Guide directly over the joint, ensuring the guide is flush to bone with no edge prominence.

Affix the outer holes with the appropriate Drill Tacks, driving to the laser line.

Note: If using the 18mm implant, both holes will be tacked.



2. Confirm Placement

Confirm proper position under fluoroscopy to avoid joint space invasion and any potential interference with provisional fixation or previously inserted SpeedPlate™ implants.



Position implants dorsolateral and plantar-medially, as a 90/90 construct.

3. Drill

Advance the Drill Tacks to the shoulder to drill the outer holes and use the appropriate Drill to create the remaining holes.

Remove all Drills and Drill tacks.

Note: If using the 18mm implant, no separate Drill is needed after the Drill Tacks are advanced.



4. Energize and Insert Implant

Energize the implant by squeezing the Threaded Rods together and placing into the Inserter Cap, ensuring they are not squeezed beyond parallel.



Manually insert the implant into the pre-drilled holes. Once partially inserted, the Inserter Cap can be lightly tapped with a mallet to fully seat the implant.

5. Deploy Implant

Remove the Inserter Cap and use to unscrew the Threaded Rods.

The underside of the Inserter Cap may be used as a tamp if further implant seating is desired.

Assess final construct and fluoroscopic views.

Note: If an 18mm implant is used at the 1st TMT, additional fixation may warrant consideration.



See flip side for removal instructions.

Lapiplasty® SpeedPlate™ Rapid Compression Implants

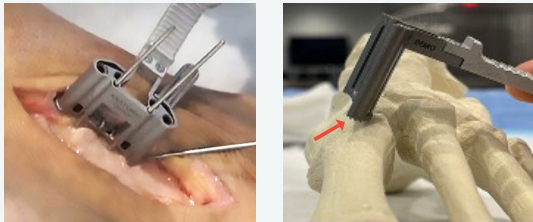
Guided Key Technique Steps

See flip side for Provisional Fixation.

1. Position Drill Sleeve and Drill Guide

Center the Drill Guide directly over the joint, ensuring the guide is flush to bone with no edge prominence.

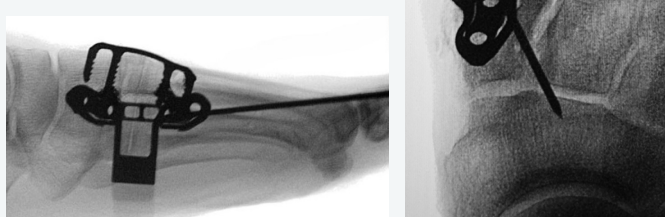
Place the Drill Sleeve over the Drill Guide and secure using (2) 1.6mm K-wires.



2. Confirm Placement

Confirm proper position under fluoroscopy to avoid joint space invasion and interference with provisional fixation or previously inserted SpeedPlate™ implants.

Position implants dorsolateral and plantar-medially, as a 90/90 construct.

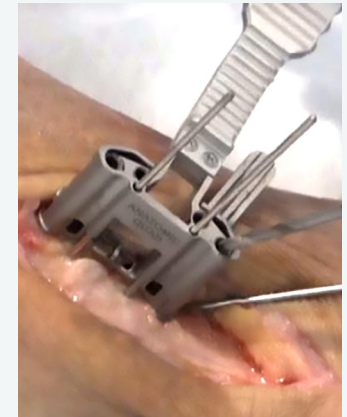


3. Drill

Use the appropriate Drill to create each hole through the Drill Guide.

For additional Drill Guide stability, the Drill Tacks may be sunk in the outer holes and left in place. Remove all Drills and Drill Tacks.

Leave the Drill Sleeve and wires in place.



4. Energize and Insert Implant

Energize the implant by squeezing the Threaded Rods together and placing into the Inserter Cap, ensuring they are not squeezed beyond parallel.

Place the implant and Inserter Cap through the Drill Sleeve.

Manually insert the implant, then lightly tap the Inserter Cap with a mallet to fully seat the implant.



5. Deploy Implant

Pull the Sleeve off, then remove the Inserter Cap and use to unscrew the Threaded Rods. Finally, remove the 1.6mm K-wires.

The underside of the Inserter Cap may be used as a tamp if further implant seating is desired.

Assess final construct and fluoroscopic views.

Note: *If an 18mm implant is used at the 1st TMT, additional fixation may warrant consideration.*



Removal Instructions:

Should removal of the implant be required, expose the arthrodesis site for access using general instrumentation.

Reapply the Threaded Rods into the implant, using the Inserter Cap to fully tighten into the threads. Gently squeeze the Threaded Rods and place the Inserter Cap overtop. Position a general instrument (freer, osteotome, etc.) under the bridge of the implant and use to pry out of the implantation site.

Alternatively, the implant can be removed by cutting the bridge and retrieving each portion independently.

