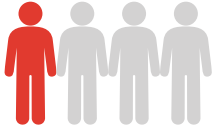


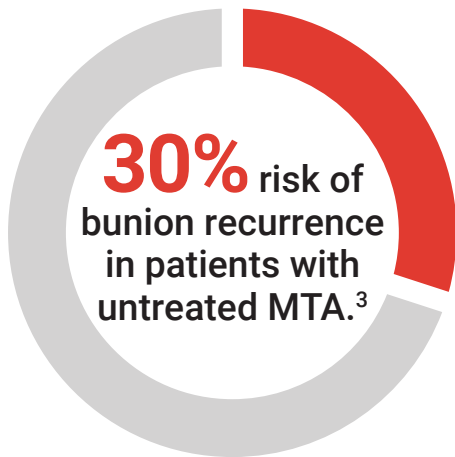
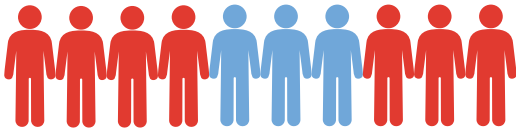
Bunions are a **progressive disorder** and do not go away on their own without surgical correction.¹

1 in 4

US adults suffer from bunions.²



Up to 30% of patients with bunions also have MTA.^{3,4}



Addressing MTA **decreases** the risk of bunion recurrence.³

Adductoplasty[®]

Midfoot Correction System

Lapiplasty[®]

3D Bunion Correction

Of course, each individual's experience is unique to them and results vary, but we invite you to visit Lapiplasty.com to read more patient stories and to learn more about the procedure, including the risks associated with surgery.

Only a surgeon can tell if Adductoplasty[®] and Lapiplasty[®] are right for you.

There are potential risks with surgery and recovery takes time. Potential risks include, but are not limited to: infection, discomfort from the presence of the implant, loosening of the implant, and loss of correction with nonunion or malunion - which means that the bone does not heal correctly.

For more information, including benefit and risk information about the procedure, please visit www.Lapiplasty.com.

1. American College of Foot and Ankle Surgeons (ACFAS) Website ©2022

2. Nix S, et al. J Foot Ankle Res. 2010. 27:3:21.

3. Aiyer AA, et al. FAI 2016; 37: 165-171.

4. Aiyer AA, et al. FAI. 2014; 35: 1292-1297.

TREACE[®]
Medical Concepts, Inc.
The Leader in Hallux Valgus Surgery™

Registered marks and trademarks of Treace Medical Concepts, Inc.
[Pat. treace.com/patents](http://Pat.treace.com/patents)

©2023 Treace Medical Concepts, Inc. All Rights Reserved. M2104A

Adductoplasty[®]

Midfoot Correction System

Because not all bunions are the same.

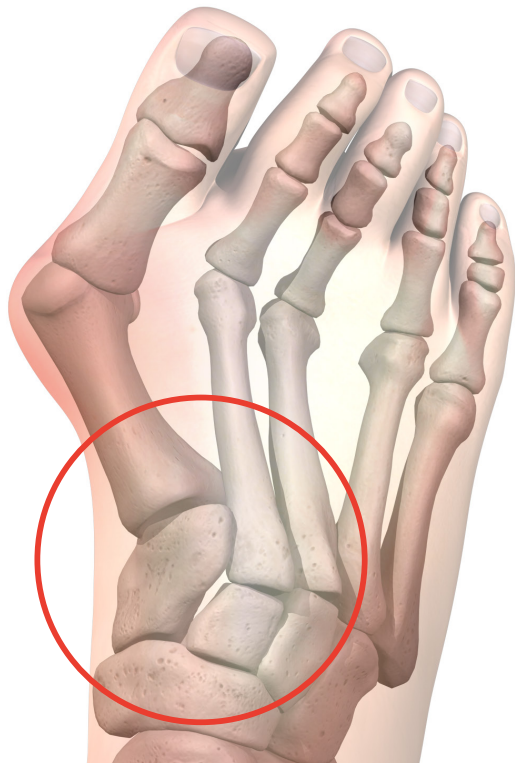


Complementing Lapiplasty[®] 3D Bunion Correction.

Know Your Bunions and Your Options

What is Metatarsus Adductus (MTA)?

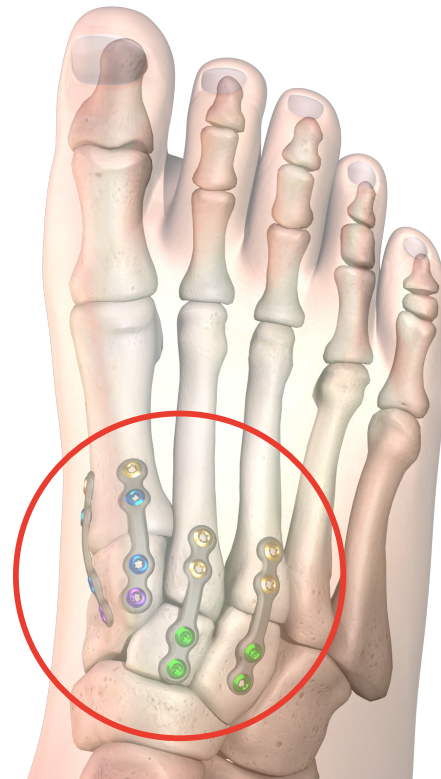
MTA is a common foot deformity that causes the front half of the foot, or forefoot, to turn inward. A full correction of the bunion may require repositioning the bones of the 2nd and 3rd toes in order to make room for complete first toe realignment.



Misaligned Joints

Why have Adductoplasty®?

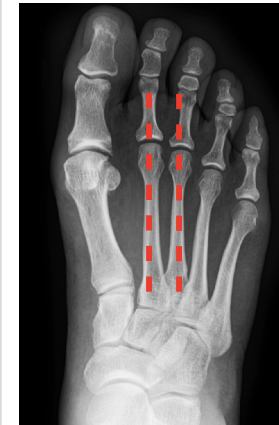
The **Adductoplasty® Procedure** corrects the alignment of the second and third toes, creating the necessary space to perform the **Lapiplasty® Procedure** and bring the big toe back into normal alignment.



Properly Aligned Joints

The Lapiplasty® Family of Procedures

Not all bunions are the same. Sometimes bunions are accompanied by big toe arthritis or a midfoot deformity like MTA. Adductoplasty® instrumentation and Lapiplasty® associated implants provide a comprehensive system that allows for realignment and stabilization of the midfoot.



Bunion without MTA



Correction with Lapiplasty® 3D Bunion Correction



Bunion with MTA



Correction with Adductoplasty® and Lapiplasty® Procedure