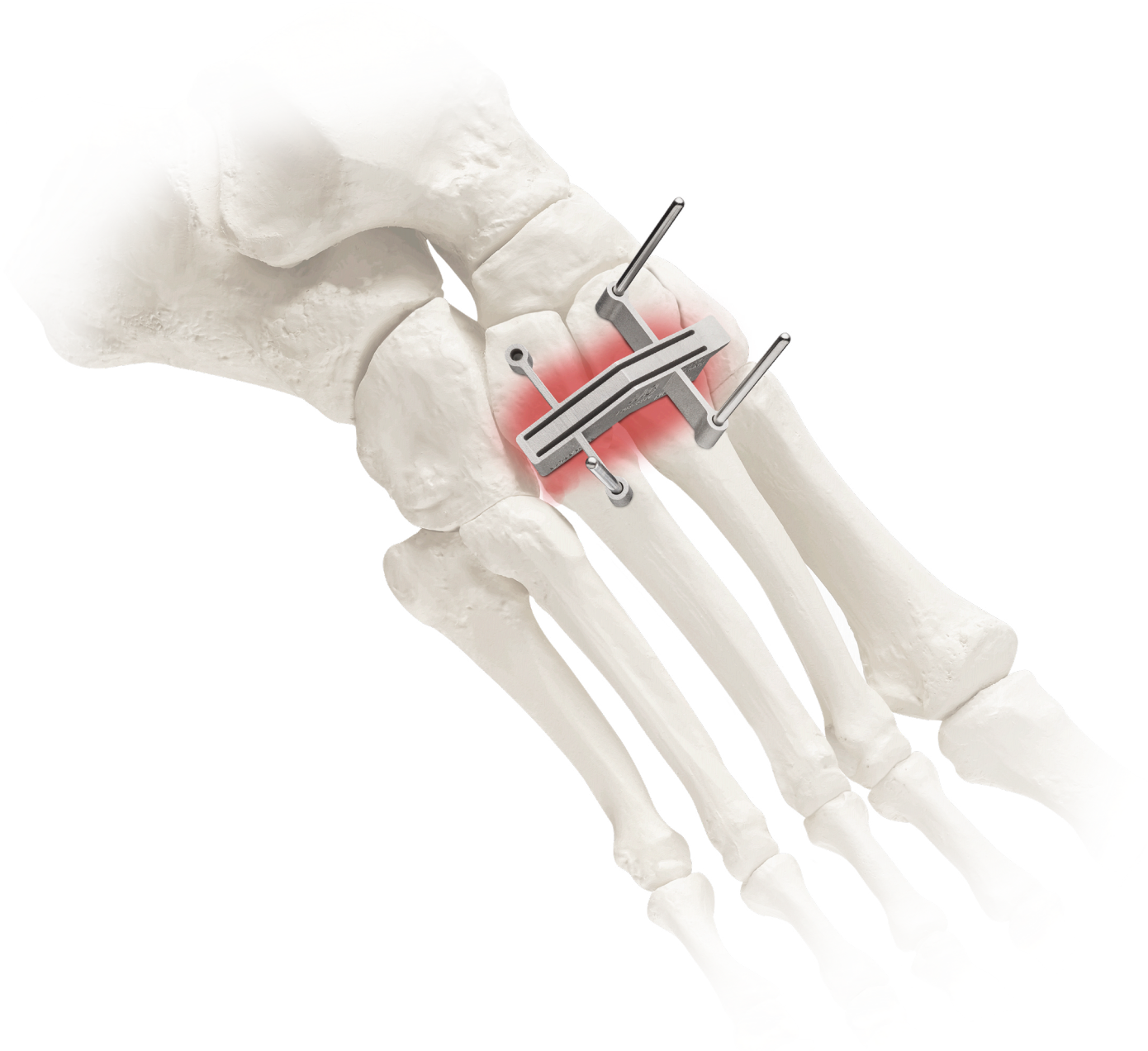


# Adductoplasty®

Midfoot Correction System



Precision Instrumentation Designed to Address Midfoot Arthritis

**TREACE**  
Medical Concepts, Inc.

# Adductoplasty®

## Midfoot Correction System

Symptomatic midfoot OA is present in >10% of individuals 50+ years of age.<sup>1</sup> **Successful arthrodesis is associated with low nonunion rates, high levels of patient satisfaction, and improved AOFAS scores.<sup>2,3</sup>** The Adductoplasty® System provides a comprehensive and reproducible solution for midfoot stabilization and fusion.

### Key Surgical Steps

Plane

Cut

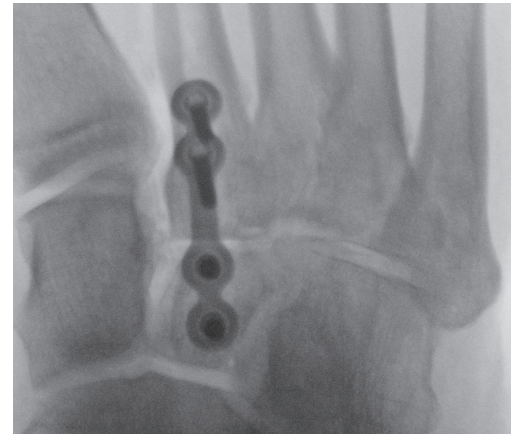
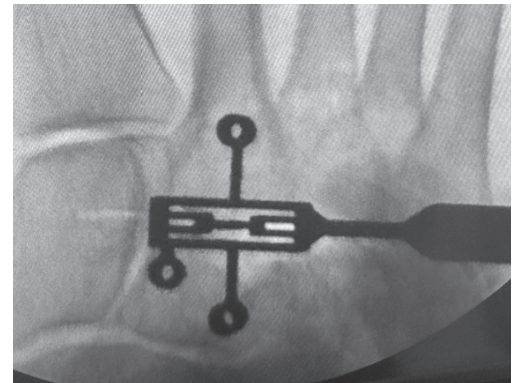
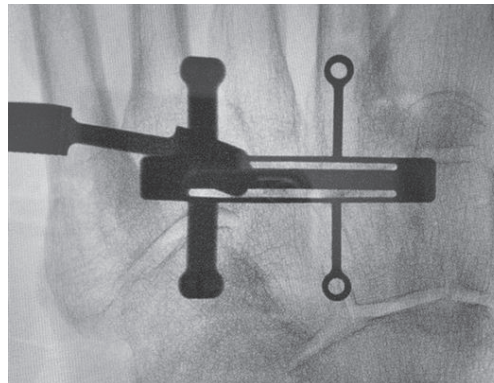
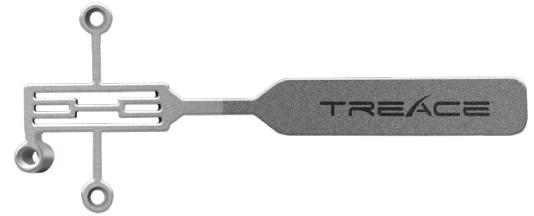
Compress

Fixate

### 0° Cut Guide: Double Joint



### 0° Cut Guide: Single Joint



\*Constructs shown are at the surgeon's discretion

Before use of the system, the surgeon should refer to the appropriate instructions for use and surgical technique for complete warnings, precautions, indications, contraindications, and adverse events. Risks include, but are not limited to: infection, pain, discomfort from the presence of the implant, loosening of the implant, and loss of correction with nonunion or malunion. If any of these occur, additional treatments may be needed. Additional information about risks, warnings, and instructions is available at [Lapiplasty.com/surgeons/labeling](http://Lapiplasty.com/surgeons/labeling).

**TREACE**  
Medical Concepts, Inc.

To learn more, visit [Lapiplasty.com](http://Lapiplasty.com)

