

# Micro-Lapiplasty™

Minimally Invasive System



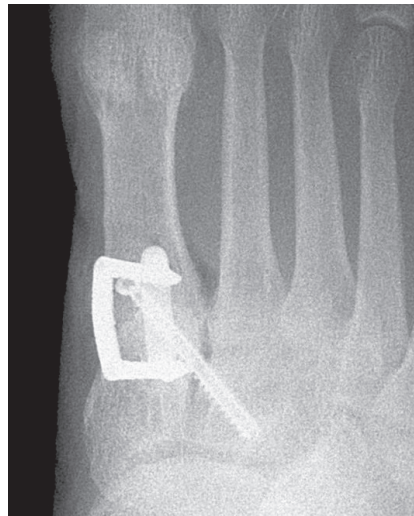
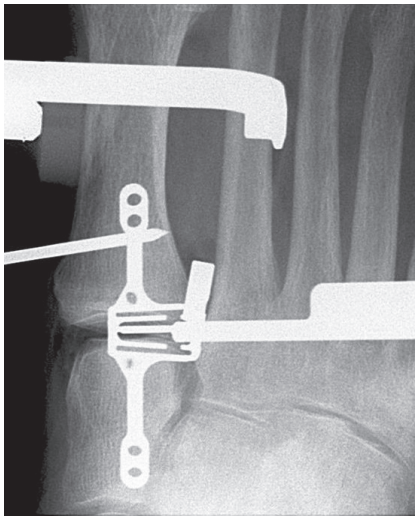
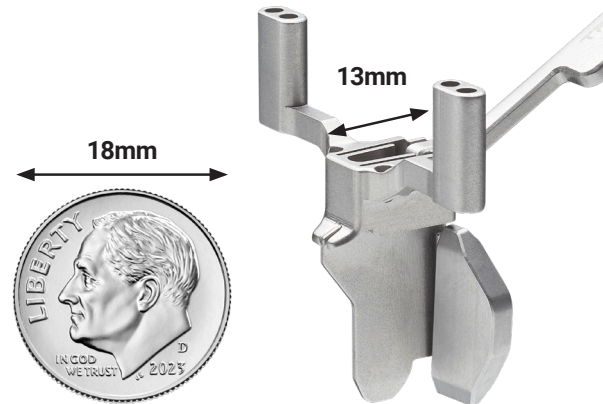
The Power of Lapiplasty® Now Through a 2cm Incision

**TREACE**  
Medical Concepts, Inc.

# Micro-Lapiplasty™

## Minimally Invasive System

- **Minimally invasive system**  
SpeedPlate™ technology enables Lapiplasty® procedure through a 2cm incision
- **Familiar technique and philosophy**  
Key steps and instruments based on the Lapiplasty® procedure
- **New instruments designed for procedural efficiency**  
Specialized tools for TMT joint prep, bone removal and retraction



Before use of the system, the surgeon should refer to the appropriate instructions for use and surgical technique for complete warnings, precautions, indications, contraindications, and adverse events. Risks include, but are not limited to: infection, pain, discomfort from the presence of the implant, loosening of the implant, and loss of correction with nonunion or malunion. If any of these occur, additional treatments may be needed. Additional information about risks, warnings, and instructions is available at [Lapiplasty.com/surgeons/labeling](https://www.lapiplasty.com/surgeons/labeling).

**TREACE**  
Medical Concepts, Inc.

To learn more, visit [Lapiplasty.com](https://www.lapiplasty.com)

