

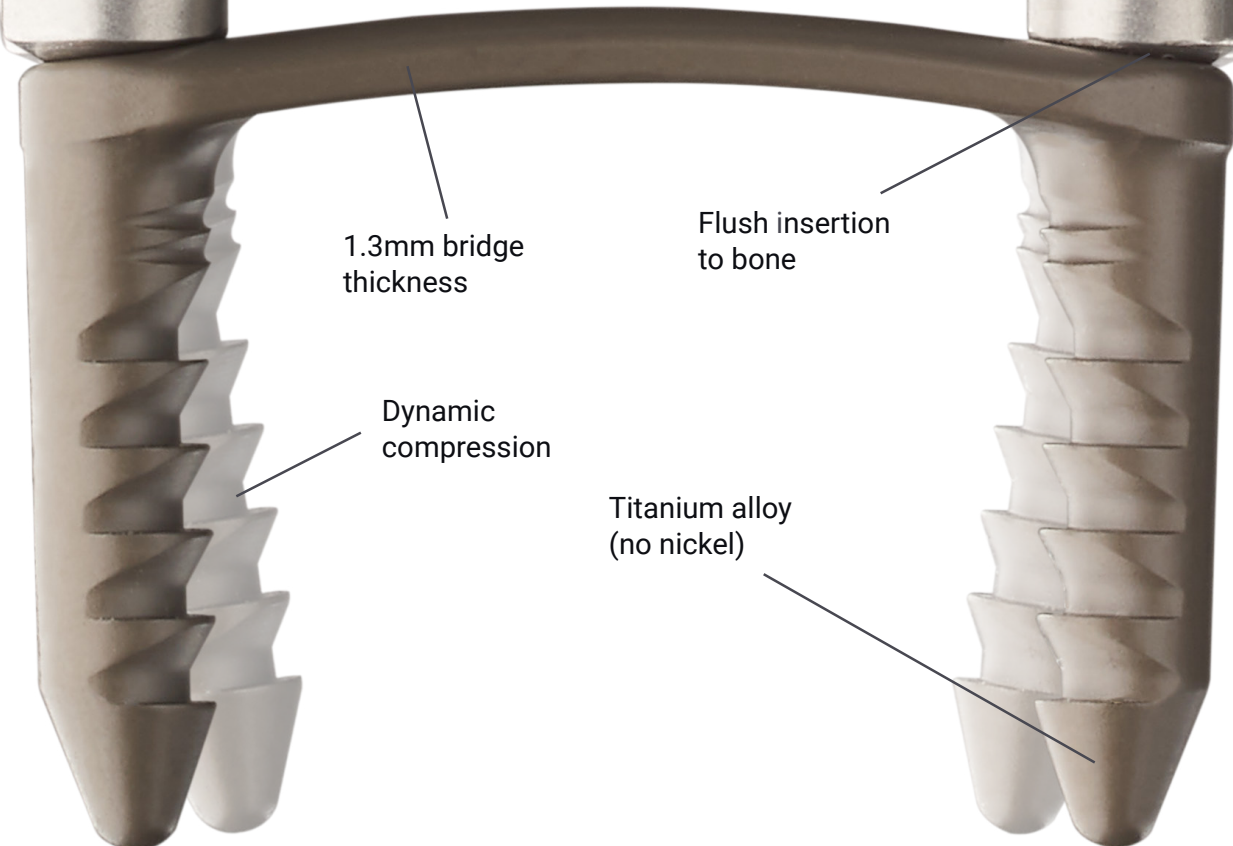


# SpeedPlate™

Rapid Compression Implants

## Case Examples

# Fast Compression Fixation is Here...



## Streamlined Insertion

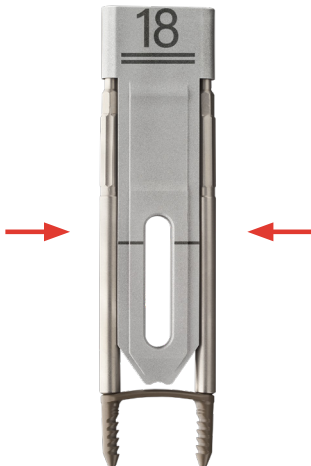
### Step 1

Position & Drill



### Step 2

Preload & Insert



### Step 3

Release & Compress



# SpeedPlate™

Rapid Compression Implants

## Dynamic Compression

offers continuous compression across the fusion site

## Titanium Alloy

implant does not contain nickel<sup>1</sup>

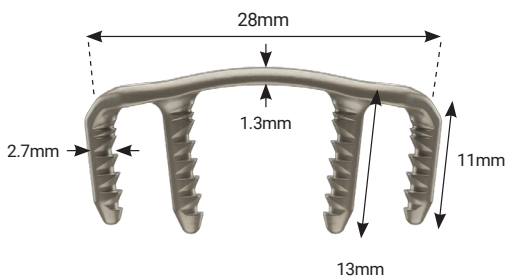
## Anatomic Contour

implant shape accommodates intercuneiform joint and tibialis anterior insertion

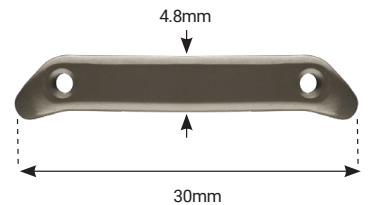
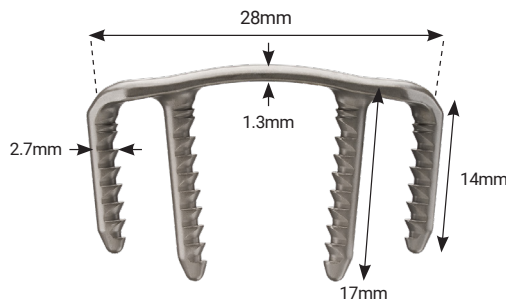


## With Broad Versatility

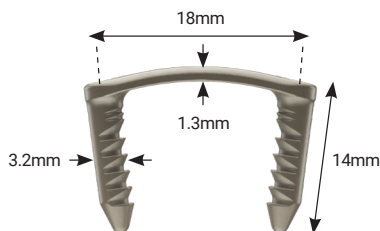
### Anatomic Quad



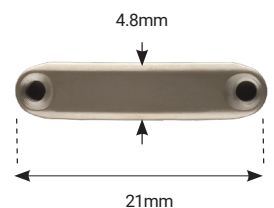
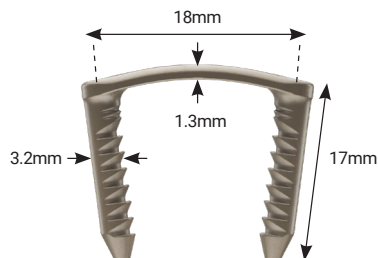
### Long Tine Anatomic Quad



### 18x14mm



### 18x17mm



# With Broad Versatility

---

## Forefoot

- Transverse MT Fracture
- MTP



## Midfoot

- NC Fusion
- Cotton Osteotomy
- TMTs

## Hindfoot

- TN Fusion
- Evans Osteotomy
- Dwyer Osteotomy
- CC Fusion

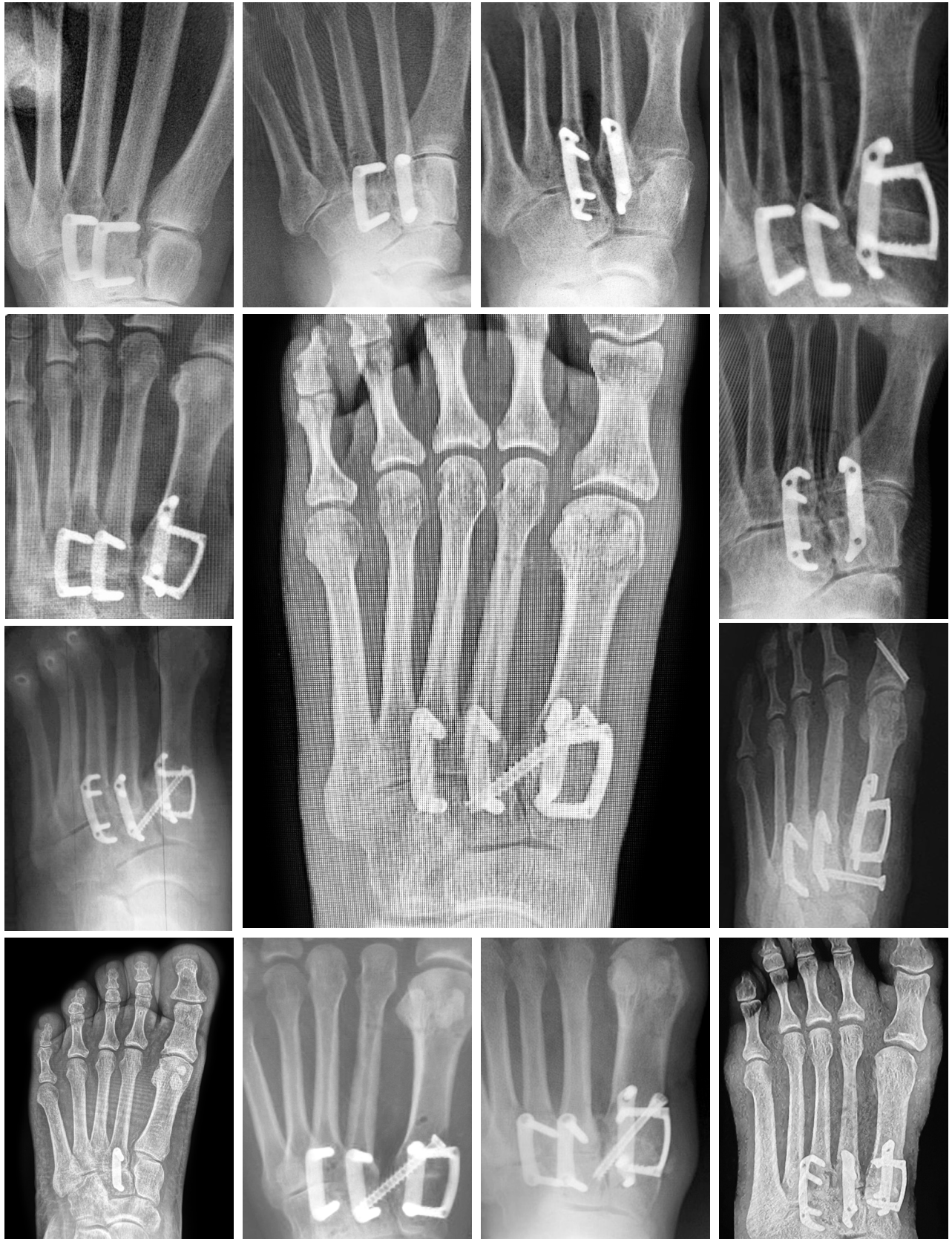
Indications for Use: The system is intended to be used for fracture fixation, osteotomy fixation, and joint arthrodesis of the foot and ankle.

## The Lapiplasty® Procedure



\*Constructs shown are at surgeons' discretion

# The Adductoplasty® Procedure



\*Constructs shown are at surgeons' discretion

Doubles and Quads



\*Constructs shown are at surgeons' discretion

## MTP Fusion and IPJ Fusion



\*Constructs shown are at surgeons' discretion



Multi-Joint Fusions



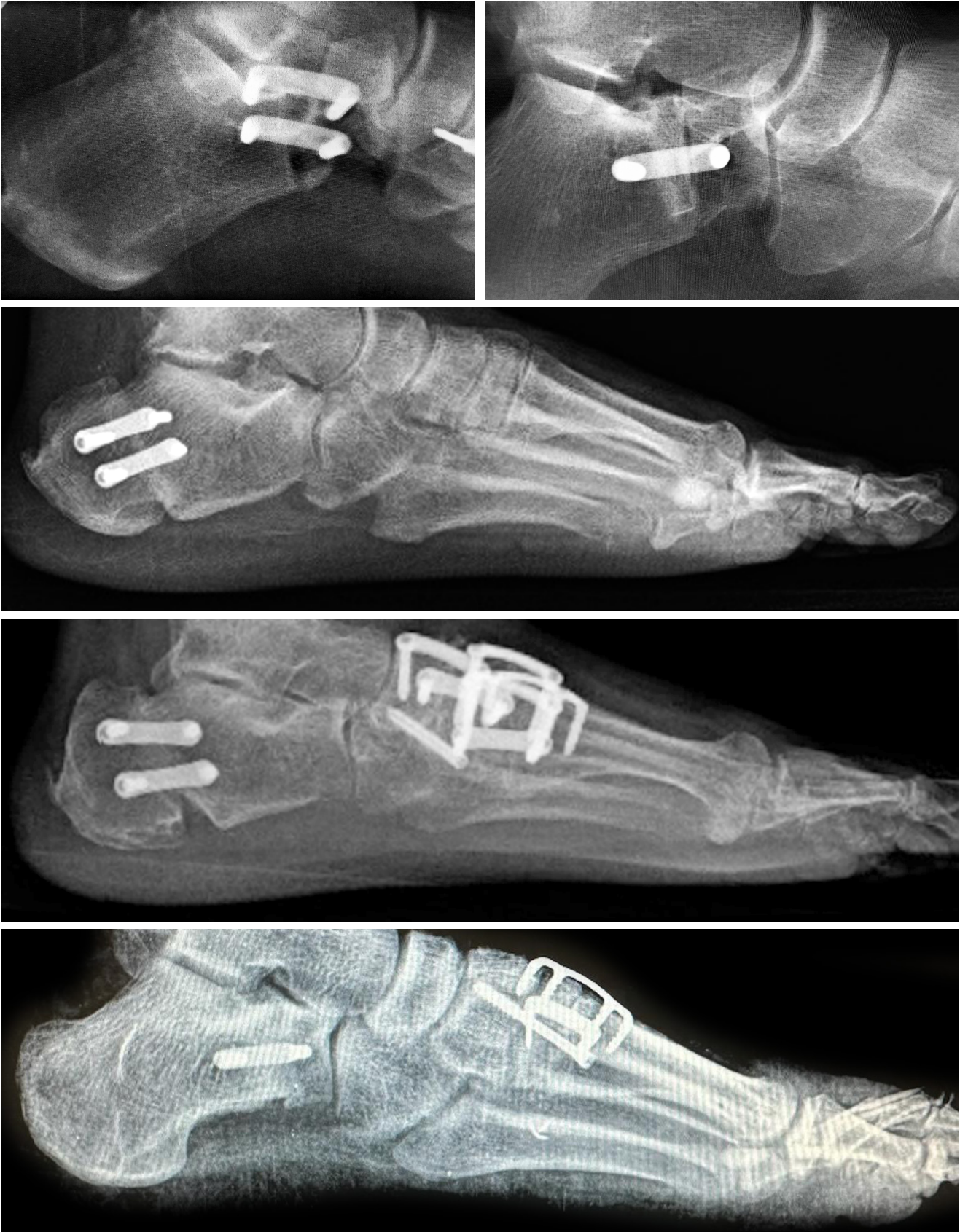
\*Constructs shown are at surgeons' discretion

# Midfoot/Hindfoot Fractures, Fusions and Osteotomies



\*Constructs shown are at surgeons' discretion

# Evans and Dwyer Osteotomies



\*Constructs shown are at surgeons' discretion



## Ordering Information

**SK50** 28x13x11mm SpeedPlate™ Anatomic Quad Rapid Compression Implant

**SK51** 18x14mm SpeedPlate™ Rapid Compression Implant

**SK52** 18x17mm SpeedPlate™ Rapid Compression Implant

**SK53** 28x17x14mm SpeedPlate™ Anatomic Quad Rapid Compression Implant

Before use of the system, the surgeon should refer to the appropriate instructions for use and surgical technique for complete warnings, precautions, indications, contraindications, and adverse events. Risks include, but are not limited to: infection, pain, discomfort from the presence of the implant, loosening of the implant, and loss of correction with nonunion or malunion. If any of these occur, additional treatments may be needed. Additional information about risks, warnings, and instructions is available at [Lapiplasty.com/surgeons/labeling](http://Lapiplasty.com/surgeons/labeling).

To learn more, visit  
[Lapiplasty.com](http://Lapiplasty.com)



**TREACE**  
Medical Concepts, Inc.

1. For complete information see ASTM F136-13, Standard Specification for Wrought Titanium-6Aluminum-4Vanadium ELI (Extra Low Interstitial) Alloy for Surgical Implant Applications (UNS R56401)

Pat. [treace.com/patents](http://treace.com/patents) ©2024 Treace Medical Concepts, Inc. All rights reserved. M2880B