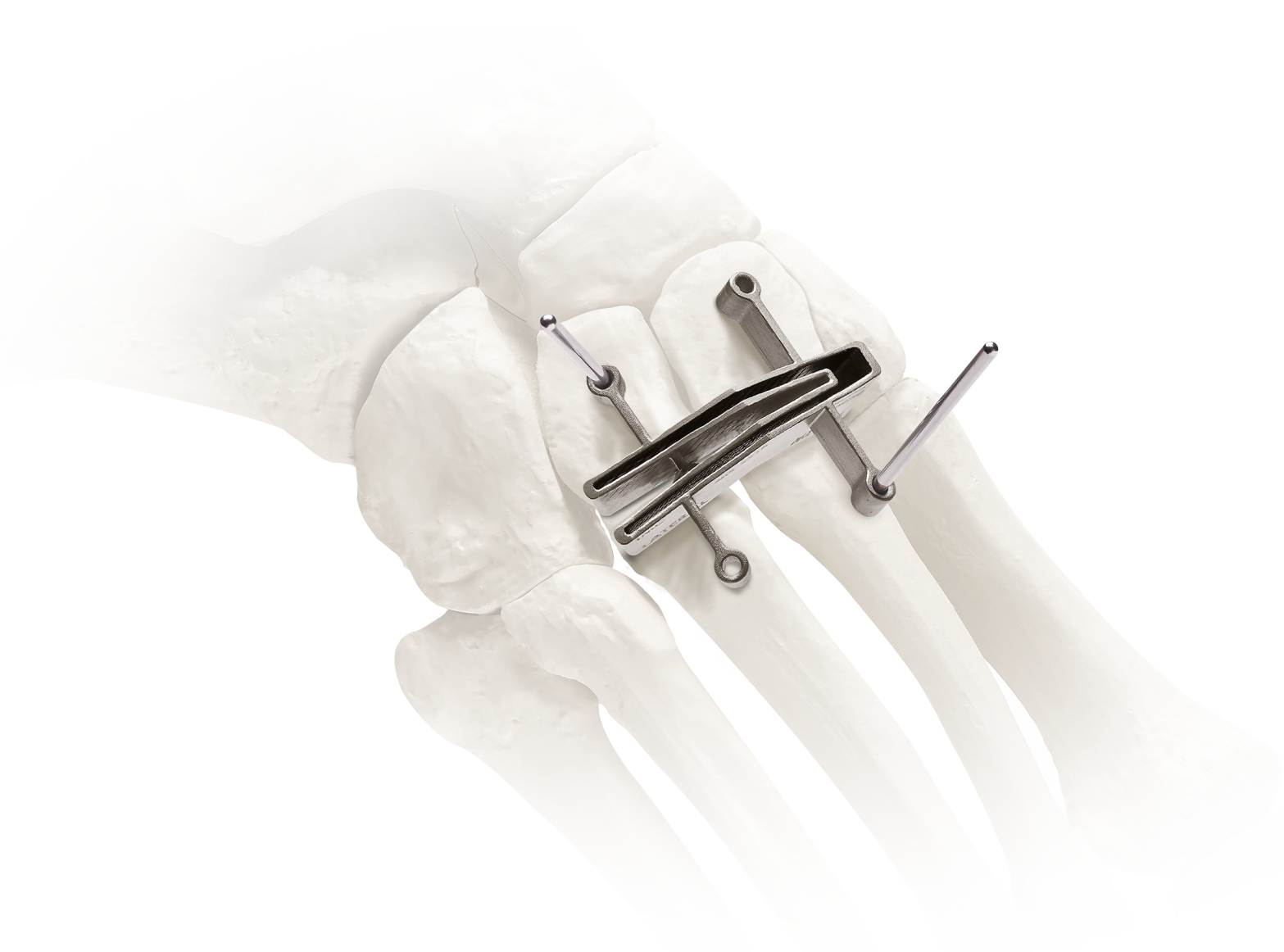


# Adductoplasty<sup>®</sup>

Midfoot Correction System



**Instrumented Approach for Corrective 2nd & 3rd TMT Joint Arthrodesis**

# Adductoplasty®

Bringing together **Lapiplasty® implants** and precision **Adductoplasty® instrumentation** for a comprehensive system designed for reproducible realignment, stabilization, and fusion of the midfoot.

## Plane.

The **Adductoplasty® Planer** allows for congruent planing of the 2nd & 3rd TMT joint surfaces (for insertion of the **Adductoplasty® Lesser TMT Cut Guide**).

---

## Cut.

The **Adductoplasty® Lesser TMT Cut Guide** is designed to deliver precise, continuous angular cuts of the 2nd & 3rd TMT joints.

---

## Compress.

The **Adductoplasty® Compressor** is designed to deliver controlled apposition and compression of the corrective arthrodesis.

---

## Fixate.

Low profile, lesser TMT titanium implants are designed to provide locking fixation for corrective arthrodesis of the lesser TMT joints.

---

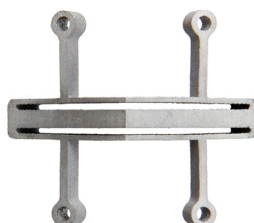


# Comprehensive System for Midfoot Pathologies

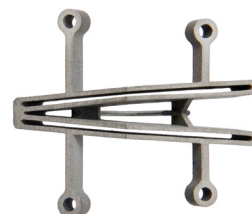
Instrumented approach designed to provide a comprehensive and reproducible solution for midfoot stabilization and fusion.



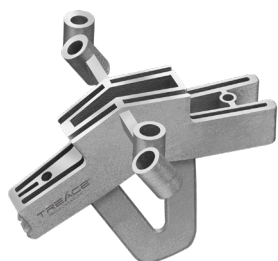
Adductoplasty®  
0° Cut Guide (Single Joint)



Adductoplasty®  
0° Cut Guide (Double Joint)



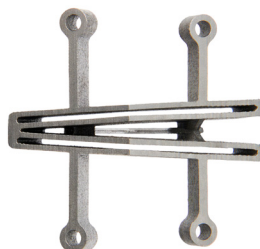
Adductoplasty®  
9° Cut Guide



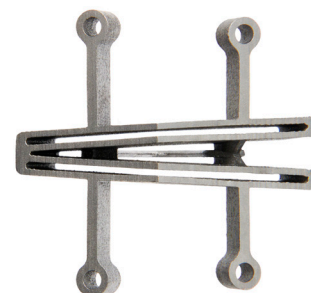
Mini-Adductoplasty™  
6° Cut Guide



Adductoplasty®  
6° Cut Guide Small



Adductoplasty®  
6° Cut Guide



Adductoplasty®  
6° Cut Guide Large



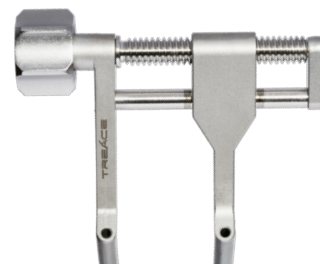
Mini-Adductoplasty™  
Incision Guide



TriTome™ Triple-Edge  
Release Instrument



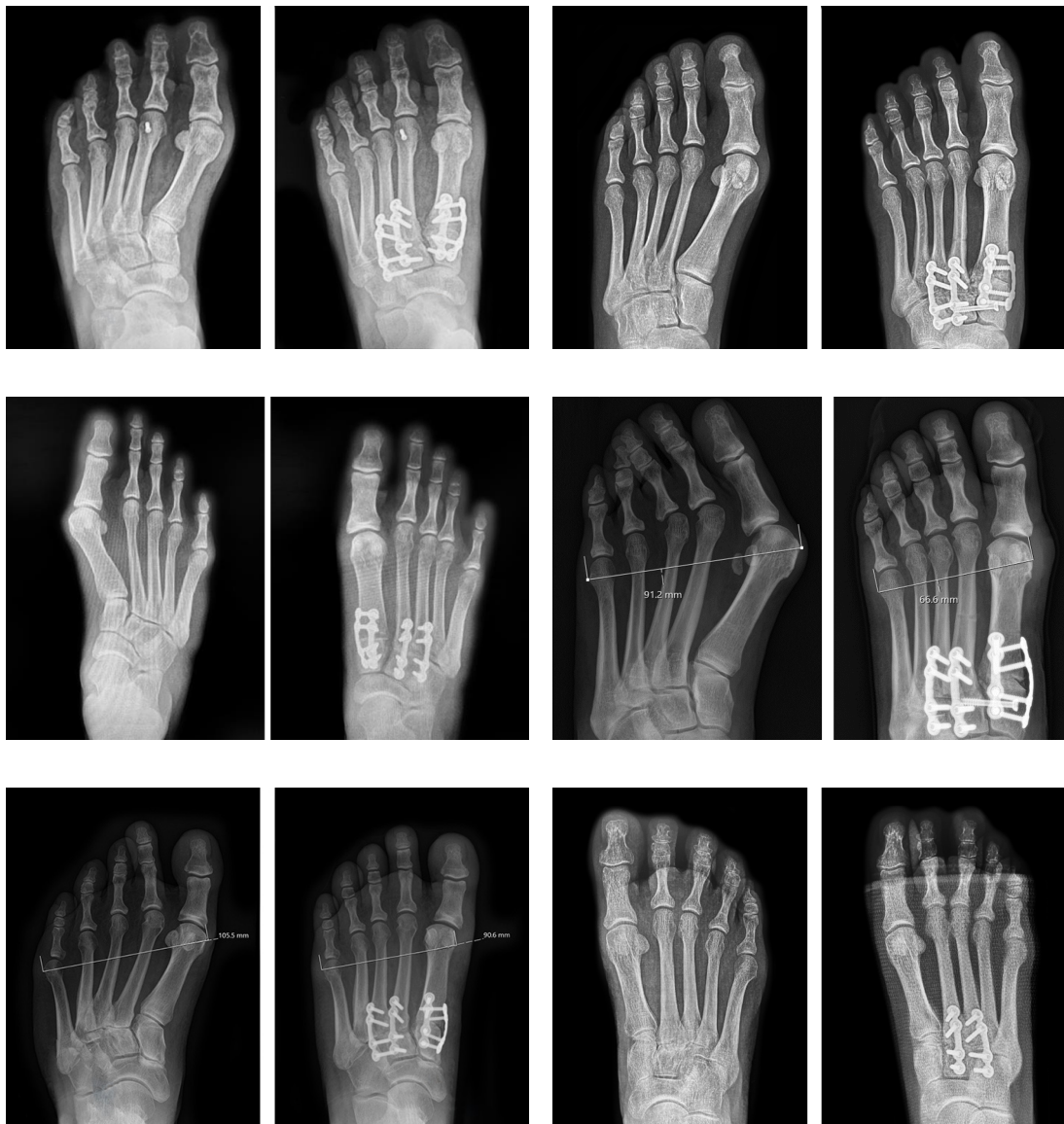
Adductoplasty®  
Planer



Adductoplasty®  
Compressor

# Instrumented Approach for Reproducible Results

Case examples demonstrating corrections of midfoot osteoarthritis and metatarsus adductus deformities with the Adductoplasty® System.



\*Constructs at surgeon's discretion. Individual results may vary. These experiences are specific to these patients only.

Before use of the system, the surgeon should refer to the appropriate instructions for use and surgical technique for complete warnings, precautions, indications, contraindications, and adverse events. Risks include, but are not limited to: infection, pain, discomfort from the presence of the implant, loosening of the implant, and loss of correction with nonunion or malunion. If any of these occur, additional treatments may be needed.

Additional information about risks, warnings, and instructions is available at [Lapiplasty.com/surgeons/labeling](http://Lapiplasty.com/surgeons/labeling).

To learn more,  
visit [Adductoplasty.com](http://Adductoplasty.com)



**TREACE**  
Medical Concepts, Inc.

See surgical technique (LBL 1405-9001) and instructions for use (LBL 1405-9005) on [www.treace.com](http://www.treace.com) for complete indications, contraindications, warnings, and precautions.

Pat. [www.treace.com/patents](http://www.treace.com/patents) ©2024 Treace Medical Concepts, Inc. All Rights Reserved. M2993A